



C2M.v2.7.ODM-MDM

5.6.3.2 Manage Device Installation and Commissioning

Creation Date: July 25, 2011

Last Updated: December 05, 2019

ORACLE®

Copyright © 2019, Oracle. All rights reserved.

This document is provided for information purposes only and the contents hereof are subject to change without notice. This document is not warranted to be error-free, nor subject to any other warranties or conditions, whether expressed orally or implied in law, including implied warranties and conditions of merchantability or fitness for a particular purpose. We specifically disclaim any liability with respect to this document and no contractual obligations are formed either directly or indirectly by this document. This document may not be reproduced or transmitted in any form or by any means, electronic or mechanical, for any purpose, without our prior written permission. Oracle, JD Edwards, PeopleSoft, and Siebel are registered trademarks of Oracle Corporation and/or its affiliates. Other names may be trademarks of their respective owners.

Contents

BRIEF DESCRIPTION	2
BUSINESS PROCESS MODEL PAGE 1	3
BUSINESS PROCESS MODEL PAGE 2	4
BUSINESS PROCESS MODEL PAGE 3	5
DETAIL BUSINESS PROCESS MODEL DESCRIPTION.....	6
TEST DOCUMENTATION RELATED TO THE CURRENT PROCESS	23
DOCUMENT CONTROL	24
ATTACHMENTS	25
<i>Acronyms & Definitions.....</i>	25
<i>Smart Meter Install Event BO.....</i>	25
<i>Manual Meter Install Event BO.....</i>	25
<i>Device Commission BO.....</i>	25
<i>Install Event - Link DC and Service Point</i>	25
<i>Install Event - Details_On_Off_History</i>	25
<i>Install Event - Update_Connect_Disconnect_Remove</i>	26
<i>Device Commission Command.....</i>	Error! Bookmark not defined.
<i>Device Commission Activity</i>	Error! Bookmark not defined.
<i>How to Read and Understand Process Diagram .URM Standards. Notations</i>	26

Brief Description

Business Process:	5.6.3.2 C2M.MDM.Manage Device Installation and Commissioning
Process Type:	Sub-Process
Parent Process:	5.6.3 C2M.MDM.Manage Supplies/Devices
Sibling Processes:	5.6.3.1 C2M. ODMv2.2-MDMV2.3. Manage Tracked Assets and Devices 5.6.3.3 C2M.MDM.Manage Device De-installation, Decommissioning and Retirement 3.3.1.1 C2M.MDM.Maintain Contact, 5.1.5.1 C2M.CCB Manage Metered Site

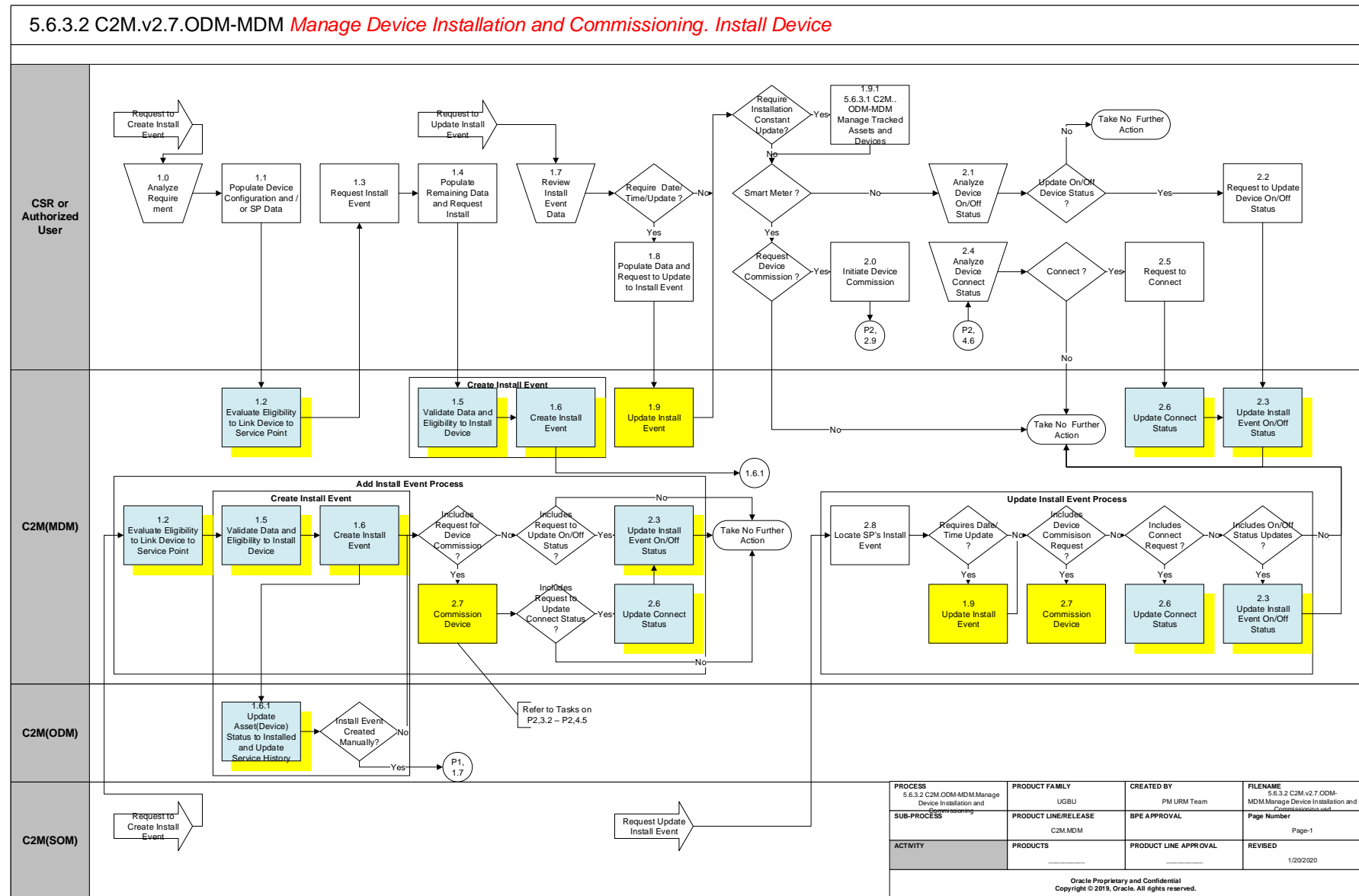
This process describes how to manage device installation and device commission in C2M(MDM). Device installation and Device commissioning can be initiated by CSR or Authorized User using user interface or automatically. The process assumes that the device and service point have already been setup in C2M(MDM) – refer to Manage Device and Manage SP process for more information. Installation event is the process of connecting the device to the service point. For those smart meters and head-end systems that are part of Oracle Smart Grid Gateway, the process commissioning the device with the head-end system including the ability for the device to communicate (take commands) between the two systems (C2M(MDM) and the head-end system)

Installation events capture the history of the devices that have been installed at a service point. In technical terms, installation events (or install events) link a specific device configuration to a service point. While a device is installed at a service point, it may be turned off (and back on again). The installation event that records the original installation date and time also records the dates and times when the device has been turned on and off. When a device is removed, the original installation event is updated with the removal date and time.

Device Commission is a command issued to establish communication between a device and the head-end system. Commissioning of a Device is reserved for Smart Meters. A Commissioned device is an active device found on the smart grid. Arming status is set (either Armed or blank) and the On/Off history is created. Device Commissioning is a part of the Install Event process.

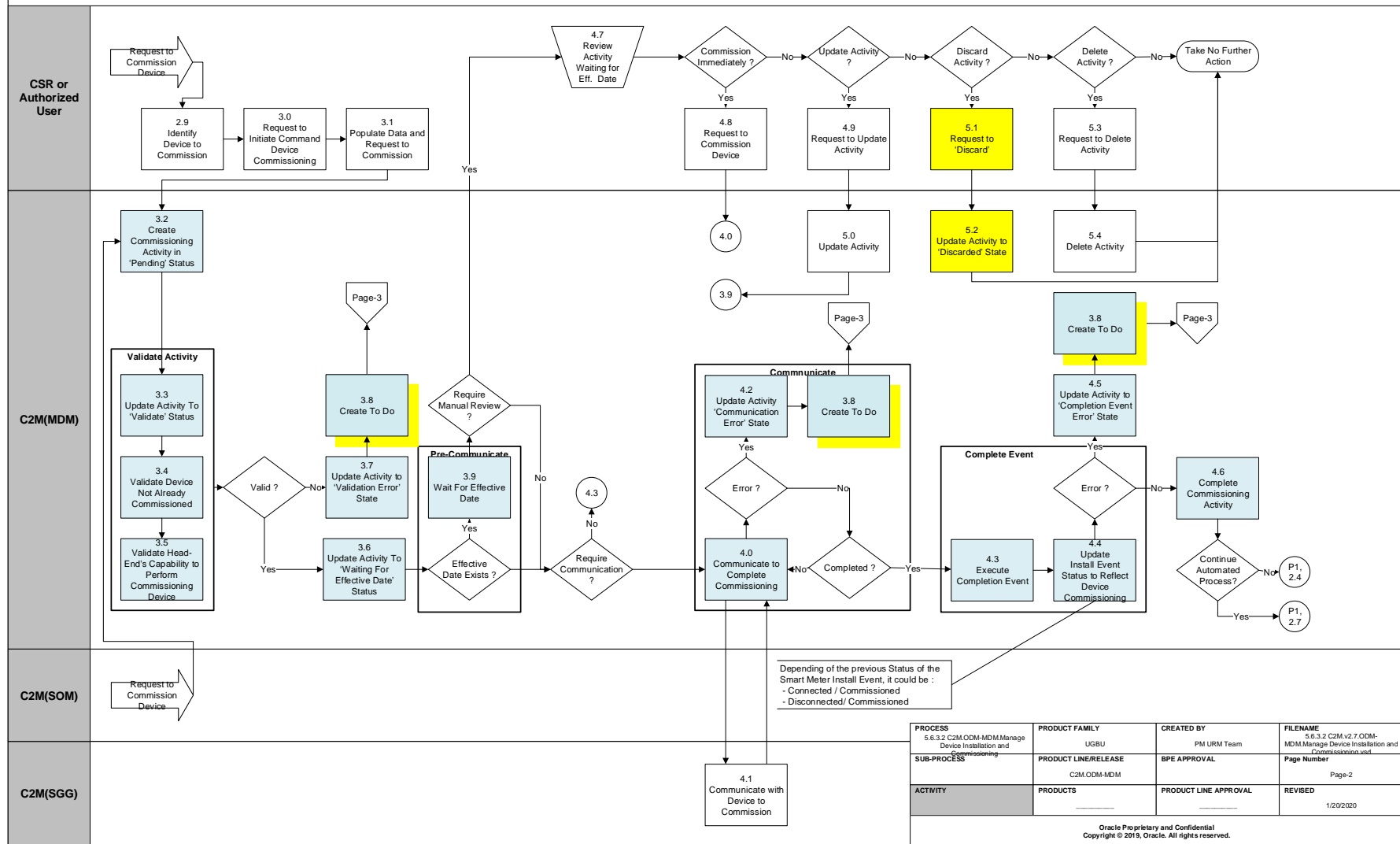
Note: Current document represents complete process for Device Commissioning .The C2M(MDM) as an application provides ability to initiate command, orchestrate processing and record results. However the actual communication with any Head End System requires integration with Head End system(s) that could be implemented by using Oracle SGG or any other similar software or custom development

Business Process Model Page 1



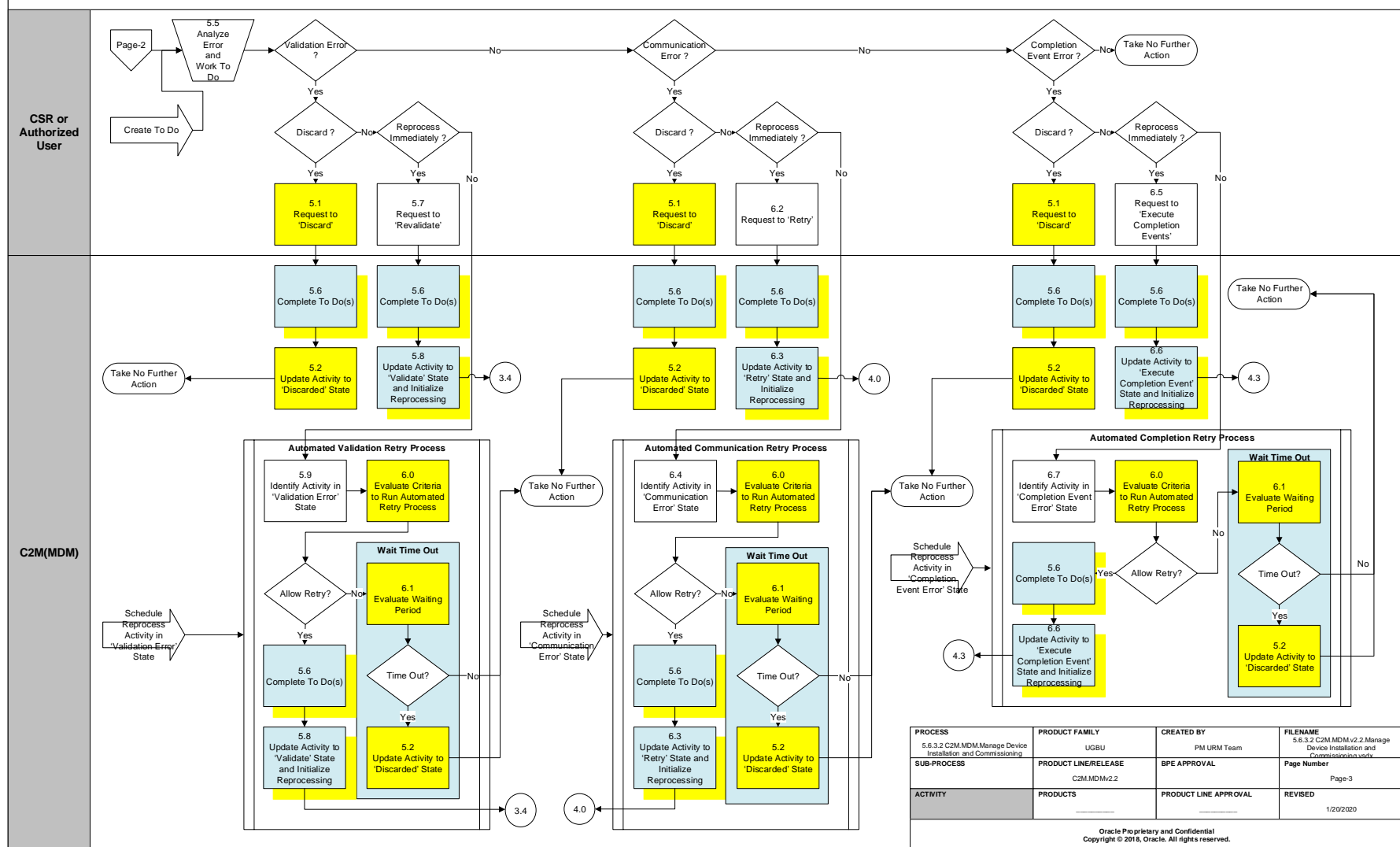
Business Process Model Page 2

5.6.3.2 C2M.v2.7.ODM-MDM *Manage Device Installation and Commissioning. Device Commissioning*



Business Process Model Page 3

5.6.3.2 C2M.ODM-MDM *Manage Device Installation and Commissioning. Exception Processing*



Detail Business Process Model Description

1.0 Analyze Requirement

Actor/Role: CSR or Authorized User

Description: When creating an install event, the CSR or Authorized User gathers all the required attributes for adding an event.

1.1 Populate Device Configuration and/or SP Data

Actor/Role: CSR or Authorized User

Description: The CSR or Authorized User populates and/or updates the maintenance object with the analyzed service point requirements.

Note: Contact on the SP for smart meters is important when the device has arming required set to "arming required".

1.2 Evaluate Eligibility to Link Device to Service Point

Actor/Role: C2M(MDM)

Description: C2M(MDM) checks to see if the meter type and service point type match.

Process Plug-in enabled (Y/N)	Available Algorithm(s):	D1-DEVCFGVAL (Validate the Device Configuration)
Business Object (Y/N)	Business Object	D1-SmartMeterInstallEvent D1-ManualMeterInstallEvent

Note: There is a validation to check if the meter type and the service point type match.

1.3 Request Install Event

Actor/Role: CSR or Authorized User

Description: Authorized makes a request by clicking "Save" - which is the actual request to create the Service Point.

1.4 Populate Remaining Data and Request Install

Actor/Role: CSR or Authorized User

Description: The CSR or Authorized User enters the remaining install event data and clicks “Save” – which is the actual request to create [install event](#).

Group: Create Install Event

1.5 Validate Data and Eligibility to Install Device

Actor/Role: C2M(MDM)

Description: C2M(MDM) runs several validations to check the device and service point.

Process Plug-in enabled (Y/N)	Available Algorithm(s):	D1-DEVCFGVAL (Validate the Device Configuration)
--------------------------------------	--------------------------------	---------------------------------------------------

Business Object (Y/N)	Business Object	D1-ManualMeterInstallEvent
		D1-SmartMeterInstallEvent

Note: *Validations include the following:*

- Check if Device Configuration is installed at another Service Point for the same install date/time
- Determine if any other install event exists for the SP, where the install date/time lies between the current install date/time and removal date/time.
- Device Configuration has "Active" status
- Device Configuration Install on Another SP

Group: Create Install Event

1.6 Create Install Event

Actor/Role: C2M(MDM)

Description: C2M(MDM) creates the install event.

Process Plug-in enabled (Y/N)	Available Algorithm(s):	D1-CREINSEVT (Create Install Event)
		D1-DET-ASMVT (Determine If Asset Movement Occurred)
		D1-CRSYRQMSG (Create Sync Request Message)
		X1-SENDIESY (Synchronize Install Event)

5.6.3.2. C2M. ODM-MDM Manage Device Installation and Commissioning

Business Object (Y/N)	Business Object
	D1-ManualMeterInstallEvent
	D1-SmartMeterInstallEvent
	D1-InstallEventSyncRequest
	D1-ODMMasterConfig

Group: Create Install Event

1.6.1 Update Asset(Device) Status to Installed and Update Service History

Actor/Role: C2M(ODM)

Description: C2M(ODM) transitions the asset status to installed and updates Service History accordingly

Process Plug-in enabled (Y/N)	Available Algorithm(s):
	W1-UPDASTND (Update Asset Node data)
	X1-InSyAstNd (Inbound Asset-Node Sync)

Business Object (Y/N)	Business Object
	D1-SeederSyncMasterConfig
	W1-OngoingSyncRequestAssetNode

1.7 Review Install Event Data

Actor/Role: CSR or Authorized User

Description: The CSR or Authorized User reviews the data after the install event has been added.

1.8 Populate Data and Request to Update to Install Event

Actor/Role: CSR or Authorized User

Description: The CSR or Authorized User enters the required data and save the data to update the install event.

1.9 Update Install Event

Actor/Role: C2M(MDM)

Description: C2M(MDM) updates the install event.

5.6.3.2 C2M.ODM-MDM.Manage Device Installation and Commissioning

Business Object (Y/N)	Business Object
	D1-ManualMeterInstallEvent
	D1-SmartMeterInstallEvent

1.9.1 5.6.3.1 C2M.ODM-MDM. Manage Tracked Assets and Devices

Actor/Role: CSR or Authorized User

Description: The CSR or Authorized User updates the installation constant. This leads to measurement reprocessing. Please refer to process **5.6.3.1 C2M.MDM. Manage Tracked Assets and Devices. Measurement Reprocessing** for further details.

2.0 Initiate Device Commission

Actor/Role: CSR or Authorized User

Description: The CSR or Authorized User selects the Commission button to trigger the device commission request in C2M(MDM).

2.1 Analyze Device On/Off Status

Actor/Role: CSR or Authorized User

Description: The CSR or Authorized User determines the [On/Off status](#).

2.2 Request to Update Device On/Off Status

Actor/Role: CSR or Authorized User

Description: The CSR or Authorized User makes the request to update the status.

2.3 Update Install Event On/Off Status

Actor/Role: C2M(MDM)

Description: The status is updated in C2M(MDM) to the request. The history of On/Off status updates of Install Event is logged in the system.

Process Plug-in enabled (Y/N)	Available Algorithm(s)
	D1-CRONOFHIS (Create On/Off History Based on Status)

Business Object (Y/N)	Business Object
	D1-ManualMeterInstallEvent
	D1-SmartMeterInstallEvent

2.4 Analyze Device Connect Status

Actor/Role: CSR or Authorized User

Description: The CSR or Authorized User determines the [Connect](#) status.

2.5 Request to Connect

Actor/Role: CSR or Authorized User

Description: The CSR or Authorized User makes the request to update the status.

2.6 Update Connect Status

Actor/Role: C2M(MDM)

Description: The status is updated in C2M(MDM) to the request.

Process Plug-in enabled (Y/N) **Available Algorithm(s):**

Business Object (Y/N) **Business Object**

Note: The request to update the Connect Status also updated the On/Off status for a Smart Meter

Group: Add Install Event Synchronization Process

2.7 Commission Device

Actor/Role: C2M(MDM)

Description: On the Install Event, the request for commission is initiated. This then allows the user to view the connect button.

Process Plug-in enabled (Y/N) **Available Algorithm(s):**

Business Object (Y/N) **Business Object**

Group: Update Install Event Synchronization Process

2.8 Locate SP's Install Event

5.6.3.2. C2M. ODM-MDM Manage Device Installation and Commissioning

Actor/Role: C2M(MDM)

Description: During the sync process, C2M(MDM) looks for the Maintenance Object (MO) that needs to be updated.

2.9 Identify Device to Commission

Actor/Role: CSR or Authorized User

Description: CSR or Authorized User analyzes the requirements and identifies the device to be commissioned.

3.0 Request to Initiate Command Device Commissioning

Actor/Role: CSR or Authorized User

Description: The MDM User will select the [Device Commissioning command](#) and populate the data acquired during analyzing the requirements.

3.1 Populate Data and Request to Commission

Actor/Role: CSR or Authorized User

Description: CSR or Authorized User populates the needed data based on analysis and selects the appropriate activity to make a request for device commission.

3.2 Create Commissioning Activity in 'Pending' Status

Actor/Role: C2M(MDM)

Description: C2M(MDM) creates the maintenance object with the data provided. When the activity is created, C2M(MDM) creates an Activity ID in Pending Status.

Business Object (Y/N)

Business Object

D1-DeviceCommission

Group: Validate Activity

3.3 Update Activity To 'Validate' Status

Actor/Role: C2M(MDM)

Description: C2M(MDM) updates the activity to Validate state and performs validation on Head-End system compatibility, commissioning status, external requestor, command eligibility and device registration.

5.6.3.2. C2M. ODM-MDM Manage Device Installation and Commissioning

Process Plug-in enabled (Y/N) Available Algorithm(s):

Algorithm Type - D1-VALDVCNAC (Validate Device Not Already Commissioned)
D1-VALACTTDI (Validate Activity Type and Transition to Error State If Invalid)
D1-VALDVCNAC (Validate Device Not Already Commissioned)
D1-CHKCMDELG (Check Device Command Eligibility)
D1-VHPCOMMS (Validate Head-End's Capability to Commission Device)
D1-CACTCOMM (Check for Existing Active Commissioning Command Request)
D1-CHKFDCOMM (Check for Concurrent Decommissioning Command Request)
D1-VAEXTREQ (Validate External Requester)
D1-VDVRINSUP (Validate Device Registration And Support For Installation)

Business Object (Y/N)

Business Object

D1-DeviceCommission

Group: Validate Activity

3.4 Validate Device Not Already Commissioned

Actor/Role: C2M(MDM)

Description: C2M(MDM) checks whether the device referenced in the current commissioning request (activity) has already been commissioned.

Process Plug-in enabled (Y/N)

Available Algorithm(s):

Algorithm Type - D1-VALDVCNAC (Validate Device Not Already Commissioned)

Business Object (Y/N)

Business Object

D1-DeviceCommission

Group: Validate Activity

3.5 Validate Head-End's Capability to Perform Commissioning Device

Actor/Role: C2M(MDM)

Description: C2M(MDM) checks to ensure that the head-end (AMI) system has the capability to support the command request.

5.6.3.2. C2M. ODM-MDM Manage Device Installation and Commissioning

Process Plug-in enabled (Y/N)	Available Algorithm(s):	D1-VHPCOMMS (Validate Head-End's Capability to Commission Device)
--------------------------------------	--------------------------------	-------------------------------------------------------------------

Business Object (Y/N)	Business Object	D1-DeviceCommission
------------------------------	------------------------	---------------------

3.6 Update Activity To 'Waiting For Effective Date' Status

Actor/Role: C2M(MDM)

Description: C2M(MDM) acknowledges to External Requester of the received data.

Process Plug-in enabled (Y/N)	Available Algorithm(s):	D1-RRER (Send Received Response to External Requester)
--------------------------------------	--------------------------------	---------------------------------------------------------

Business Object (Y/N)	Business Object	D1-DeviceCommission
------------------------------	------------------------	---------------------

3.7 Update Activity to 'Validation Error' State

Actor/Role: C2M(MDM)

Description: C2M(MDM) updates the status to 'Validation Error' if any of the validations fail.

Business Object (Y/N)	Business Object	D1-DeviceCommission
------------------------------	------------------------	---------------------

3.8 Create To Do

Actor/Role: C2M(MDM)

Description: C2M(MDM) attempts to create a To Do entry using the To Do type and role specified by the first and second algorithm parameters.

Process Plug-in enabled (Y/N)	Available Algorithm(s):	D1-CTDEBOE (Create To Do Entry for BO in Error)
--------------------------------------	--------------------------------	-------------------------------------------------

Business Object (Y/N)	Business Object	D1-DeviceCommission
------------------------------	------------------------	---------------------

5.6.3.2 C2M.ODM-MDM.Manage Device Installation and Commissioning

Group: Pre-communicate

3.9 Wait For Effective Date

Actor/Role: C2M(MDM)

Description: C2M(MDM) transitions the activity to a state configured with a transition condition of F1OK when the activity's effective date time is reached (process date time >= effective date time). If the activity's effective date time is not provided, the application initiates execution of the command and transitions - the activity to a state configured with a transition condition of F1OK without waiting.

Process Plug-in enabled (Y/N) **Available Algorithm(s):**

D1-WAITEFFDT (Wait for Effective Date)

Business Object (Y/N) **Business Object**

D1-DeviceCommission

Group: Communicate

4.0 Communicate to Complete Commissioning

Actor/Role: C2M(MDM)

Description: Application creates outbound communication.

Process Plug-in enabled (Y/N) **Available Algorithm(s):**

D1-CMOCC (Commissioning Outbound Communication Creation)
D1-AMIIOBCOMM (AMI Device Identifier Outbound Communication Creation)
D1-UPDEVIDD (Update AMI Device ID on Device)
D1-EVLRESREG (Evaluate Device's Head-End System Registration Status)
D1-CMSOBCOMM (Commissioning Outbound Communication Creation)
D1-VHCPCMVER (Validate Head-End's Ability to Perform Commission Verification)
D1-VERCOMM (Verify Commission based on Completion and Verification Required Flag)
D1-EVLREGONL (Support for Registration-Only Mode)
D1-CMEOC (Create Device Installation Outbound Communication)

Business Object (Y/N)	Business Object	<input type="text" value="D1-DeviceCommission"/>
------------------------------	------------------------	--------------------------------------------------

4.1 Communicate with Device to Commission

Actor/Role: C2M(SGG)

Description: Head-End communicates with C2M(MDM) via Middleware on one-side and with Device on the other side to communicate the Commissioning Instructions/Information between C2M(MDM) and Devices.

Business Object (Y/N)	Business Object	<input type="text" value="D1-DeviceCommission"/>
------------------------------	------------------------	--------------------------------------------------

Group: Communicate

4.2 Update Activity 'Communication Error' State

Actor/Role: C2M(MDM)

Description: C2M(MDM) send a response to the initiator of the device commission request.

Process Plug-in enabled (Y/N)	Available Algorithm(s):	<input type="text" value="D1-RBOE (Retry BO in Error)"/>
--------------------------------------	--------------------------------	----------------------------------------------------------

Business Object (Y/N)	Business Object	<input type="text" value="D1-DeviceCommission"/>
------------------------------	------------------------	--------------------------------------------------

Group: Complete Event

4.3 Execute Completion Event

Actor/Role: C2M(MDM)

Description: C2M(MDM) transitions all completion events associated to the current activity Business Object (BO) to their executed state.

Process Plug-in enabled (Y/N)	Available Algorithm(s):	<input type="text" value="D1-EXCMPEVTS (Execute Completion Events)"/>
--------------------------------------	--------------------------------	-----------------------------------------------------------------------

Business Object (Y/N)	Business Object	<input type="text" value="D1-DeviceCommission"/>
------------------------------	------------------------	--------------------------------------------------

Group: Complete Event

4.4 Update Install Event Status to Reflect Device Commissioning

Actor/Role: C2M(MDM)

Description: C2M(MDM) updates the Install Event to have a status of Commission.

Business Object (Y/N)	Business Object	D1-SmartMeterInstallEvent
------------------------------	------------------------	---------------------------

4.5 Update Activity to 'Completion Event Error' State

Actor/Role: C2M(MDM)

Description: C2M(MDM) updates the Install Event to have a status of Commission.

Process Plug-in enabled (Y/N)	Available Algorithm(s):	D1-CTDEBOE (Create To Do Entry for BO in Error)
--------------------------------------	--------------------------------	-------------------------------------------------

Business Object (Y/N)	Business Object	D1-DeviceCommission
------------------------------	------------------------	---------------------

4.6 Complete Commission Activity

Actor/Role: C2M(MDM)

Description: C2M(MDM) complete commission activity.

Process Plug-in enabled (Y/N)	Available Algorithm(s):	D1-CTDEBOE (Create To Do Entry for BO in Error)
		D1-SRER (Send Success Response to External Requester)
		D1-PASSPA (Pass Parent Activity)
		D1-UPAEDT (Update Parent Activity's Event Date Time)
		D1-PREPULK (Prepare Bulk Response)

Business Object (Y/N)	Business Object	D1-DeviceCommission
------------------------------	------------------------	---------------------

4.7 Review Activity waiting for Eff. Date

Actor/Role: CSR or Authorized User

Description: CSR or Authorized User reviews when required for manual Effective Date.

4.8 Request to Commission Device

Actor/Role: CSR or Authorized User

Description: The CSR or Authorized User makes the request to update an existing device commission activity.

Business Object (Y/N)	Business Object	<input type="text" value="D1-DeviceCommission"/>
------------------------------	------------------------	--------------------------------------------------

4.9 Request to Update Activity

Actor/Role: CSR or Authorized User

Description: The CSR or Authorized User makes the request to update an existing device commission activity.

Business Object (Y/N)	Business Object	<input type="text" value="D1-DeviceCommission"/>
------------------------------	------------------------	--------------------------------------------------

5.0 Update Activity

Actor/Role: C2M(MDM)

Description: C2M(MDM) accepts the changes made by the user for the device commission.

Business Object (Y/N)	Business Object	<input type="text" value="D1-DeviceCommission"/>
------------------------------	------------------------	--------------------------------------------------

5.1 Request to 'Discard'

Actor/Role: CSR or Authorized User

Description: CSR or Authorized User when reviews the Activity in current state and decides that the Activity cannot be used, can manually make a request to discard it.

Business Object (Y/N) **Business Object**

D1-DeviceCommission

5.2 Update Activity to 'Discarded' State

Actor/Role: C2M(MDM)

Description: C2M(MDM) transitions Activity to 'Discarded' state indicating that it cannot be used further. However it remains in the system.

Process Plug-in enabled (Y/N) **Available Algorithm(s):**

D1-COOC (Cancel Outstanding Outbound Communication)
D1-FRER (Send Fail Response to External Requester)

Business Object (Y/N) **Business Object**

D1-DeviceCommission

5.3 Request to Delete Activity

Actor/Role: CSR or Authorized User

Description: The CSR or Authorized User makes the request to delete an existing device commission activity.

5.4 Delete Activity

Actor/Role: C2M(MDM)

Description: C2M(MDM) updates removes activity that was created.

Business Object (Y/N) **Business Object**

D1-DeviceCommission

5.5 Analyze Error and Work To Do

Actor/Role: CSR or Authorized User

Description: CSR or Authorized User analyzes the error logged and respective 'To Do' created to determine the corrective action. User performs work to resolve the error.

Business Object (Y/N) **Business Object**

D1-DeviceCommission

5.6 Complete To Do(s)

Actor/Role: C2M(MDM)

Description: C2M(MDM) find all non-completed 'To Do' entries and completes them before reprocessing.

Process Plug-in enabled (Y/N) **Available Algorithm(s):**

Business Object (Y/N) **Business Object**

5.7 Request to 'Revalidate'

Actor/Role: CSR or Authorized User

Description: When the Activity is in 'Validation Error' state and CSR or Authorized User has corrected the error, can manually make request to 'Revalidate'.

Business Object (Y/N) **Business Object**

5.8 Update Activity to 'Validate' State and Initialize Reprocessing

Actor/Role: C2M(MDM)

Description: C2M(MDM) transitions the Activity to 'Revalidate' state and initializes reprocessing.

Process Plug-in enabled (Y/N) **Available Algorithm(s):**

Business Object (Y/N) **Business Object**

5.9 Identify Activity in 'Validation Error' State

Actor/Role: C2M(MDM)

Description: C2M(MDM) identifies all Device Commission Activities in 'Validation Error' state.

Process Plug-in enabled (Y/N)	Available Algorithm(s):	<input type="text" value="D1-RBOE (Retry BO in Error)"/>
Business Object (Y/N)	Business Object	<input type="text" value="D1-DeviceCommission"/>
Customizable process (Y/N)	Process Name	<input type="text" value="D1-CRERR (Command Request Error - Retry)"/>

6.0 Evaluate Criteria to Run Automated Retry Process

Actor/Role: C2M(MDM)

Description: Batch process is configured for this automated retry process. Batch parameters govern whether the processing is further restricted by maintenance object, batch code, command request type, business object, status, etc. Currently, the Batch process used for reprocessing the Activity is "Command Request Error - Retry (D1-CRERR)". This batch process invokes monitoring rules associated with the current state of Activity.

Process Plug-in enabled (Y/N)	Available Algorithm(s):	<input type="text" value="D1-RBOE (Retry BO in Error)"/>
Business Object (Y/N)	Business Object	<input type="text" value="D1-DeviceCommission"/>
Customizable process (Y/N)	Process Name	<input type="text" value="D1-CRERR (Command Request Error - Retry)"/>

6.1 Evaluate Waiting Period

Actor/Role: C2M(MDM)

Description: C2M(MDM) evaluates the waiting period to ensure that the Activity does not stay in its current state for too long. On the expiration of the wait time, it transitions the Activity to 'Discard' State.

Process Plug-in enabled (Y/N)	Available Algorithm(s):	<input type="text" value="D1-WTTMOUT (Wait Time Out - Transition to Rejection)"/>
--------------------------------------	--------------------------------	-----------------------------------------------------------------------------------

Business Object (Y/N) **Business Object**

Customizable process (Y/N) **Process Name**

6.2 Request to 'Retry'

Actor/Role: CSR or Authorized User

Description: When the Activity is in 'Communication Error' state and CSR or Authorized User has corrected the error, can manually make request to 'Retry'.

Business Object (Y/N) **Business Object**

6.3 Update Activity to 'Retry' State and Initialize Reprocessing

Actor/Role: C2M(MDM)

Description: C2M(MDM) transitions the Activity to 'Retry' state and initializes reprocessing.

Process Plug-in enabled (Y/N) **Available Algorithm(s):**

Business Object (Y/N) **Business Object**

6.4 Identify Activity in 'Communication Error' State

Actor/Role: C2M(MDM)

Description: C2M(MDM) identifies all Device Commission Activities in 'Communication Error' state.

Process Plug-in enabled (Y/N) **Available Algorithm(s):**

Business Object (Y/N) **Business Object**

Customizable process (Y/N) Process Name

6.5 Request to 'Execute Completion Events'

Actor/Role: CSR or Authorized User

Description: When the Activity is in 'Completion Event Error' state and CSR or Authorized User has corrected the error, can manually make request to 'Execute completion events'.

Business Object (Y/N) Business Object

6.6 Update Activity to Execute Completion Event State and Initialize Reprocessing

Actor/Role: C2M(MDM)

Description: C2M(MDM) transitions the Activity to 'Execute Completion Event' state and initializes reprocessing.

Process Plug-in enabled (Y/N) Available Algorithm(s):

Business Object (Y/N) Business Object

6.7 Identify Activity in 'Completion Event Error' State

Actor/Role: C2M(MDM)

Description: C2M(MDM) identifies all Device Commission Activities in 'Completion Event Error' state.

Process Plug-in enabled (Y/N) Available Algorithm(s):

Business Object (Y/N) Business Object

Customizable process (Y/N) Process Name

Test Documentation related to the Current Process

ID	Document Name	Test Type

Document Control

Change Record

Date	Author	Version	Change Reference
7/25/2011	Giezelle Raynor	1	Initial draft
9/13/2011	Srinivas Rao Kanteti	2	Second draft
9/17/2011	Galina Polonsky	2	Review
10/17/2011	Layne Nelson	2	Review
12/12/2011	Galina Polonsky	2.1	Minor Updates. Review, Approval
07/12/2015	Galina Polonsky	2.2	Minor Updates. Review, Approval
08/29/2017	Isuru Ranasinghe	2.2	Minor formatting changes
10/20/2017	Chetan Raut	2.3	Modified Visio, Process description and C2M Screenshots
12/03/2017	Galina Polonsky		Reviewed, Approved
10/02/2019	Satya Kalavala		Update for v2.7 format
10/10/2019	Jerry Chick		Updated to include ODM related tasks
12/05/2019	Galina Polonsky		Reviewed, Approved

Attachments

Acronyms & Definitions



Acronyms &
Definitions

Smart Meter Install Event BO



Smart Meter Install
Event BO

Manual Meter Install Event BO



Manual Meter Install
Event BO

Device Commission BO



Device Commission
BO

Install Event - Link DC and Service Point



Install Event - Link
DC and Service Point

Install Event - Details_On_Off_History



Install Event
Details_On_Off_Histo

Device Commission Command



Device Commission
Command

Install Event - Update_Connect_Disconnect_Remove



Install Event -
Update_Connect_Dis

How to Read and Understand Process Diagram .URM Standards. Notations



URM standards.
Notations.Attachmen